

"A PERFECT FILM. RIVETING, POWERFUL AND IMPORTANT"
OBSERVER

A TODD HAYNES FILM

MARK RUFFALO ANNE HATHAWAY TIM ROBBINS
BILL CAMP VICTOR GARBER AND BILL PULLMAN

DARK WATERS

ONE OF THE DEADLIEST COVER-UPS
IN AMERICAN HISTORY



SCREENPLAY BY MARIO CORREA AND MATTHEW MICHAEL CARNAHAN DIRECTED BY TODD HAYNES

PARTICIPANT PRESENTS A WILLI HILL/KILLER CONTENT PRODUCTION A TODD HAYNES FILM "DARK WATERS" MARK RUFFALO ANNE HATHAWAY TIM ROBBINS BILL CAMP VICTOR GARBER MADE WINNINGHAM AND BILL PULLMAN
CASTING BY LAURA ROSENTHAL CSA AND SUPERVISOR RANDALL POSTER MUSIC BY MARCELO ZARIVOS COSTUME DESIGNER CHRISTOPHER PETERSON EDITOR AFFONSO GONCALVES ACE PRODUCTION DESIGNER HANNAH BEACHLER EXECUTIVE PRODUCER EDUARDO LACHMAN ACE
EXECUTIVE PRODUCERS JEFF SKOLL JONATHAN KING ROBERT KESSEL MICHAEL SLEED PRODUCED BY MARK RUFFALO CHRISTINE VACHON PAMELA KOFFLER SCREENPLAY BY MARIO CORREA AND MATTHEW MICHAEL CARNAHAN DIRECTED BY TODD HAYNES



IN CINEMAS SOON

© 2019 STORYTELLER DISTRIBUTION CO., LLC.

MHI Community Collaborative Environmental Justice Summary

Overview of April 2023 Culmination Event

A two-day Environmental Justice event was held on April 24th and 25th by the Multicultural Health Institute (MHI), with about 100 attendees in each session. The event aimed to raise awareness about the dangers of toxic chemicals, the importance of environmental justice, and the need for stricter regulations to protect public health.

April 24th, 2023: Dark Waters Film Screening



Day 1 of the event was held at Fogartyville, where the attendees watched the screening of the film *Dark Waters*, which is based on the true story of New Alum Robert Bilott's lawsuit against the multinational chemical company DuPont. The film depicted the risks and challenges that Bilott faced while uncovering the connection between unexplained chronic illnesses and deaths and the use of the "Forever chemical" PFOA in DuPont's manufacturing processes.

Bilott was approached by a farmer, Wilbur Tennant, who asked him to investigate the unexplained animal deaths on his farm in Parkersburg, West Virginia. Bilott discovered that the deaths were caused by the chemical PFOA, which was used to manufacture Teflon. He also found that DuPont had known about the chemical's toxicity for decades but did not make the findings public. After a long legal battle, Bilott successfully won the case against DuPont, resulting in a settlement of over \$671 million for more than 3,500 disease cases.

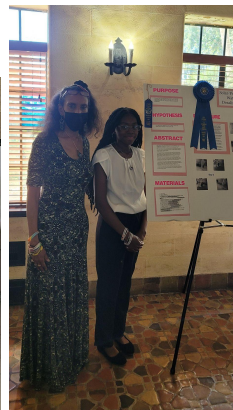
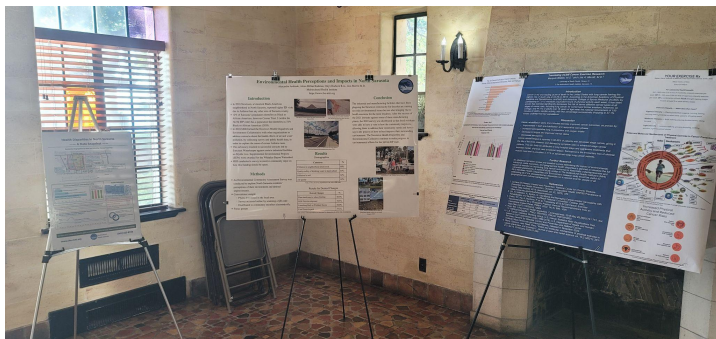
Following the screening, Bilott facilitated a community conversation, sharing his insights into the case, the moral dilemmas that had to be overcome, and answering the audience's questions.



April 25th, 2023: Environmental Justice Workshop

Day 2 of the event was held in the lovely setting of Powel Crosley Estates, where the conversation continued with a panel of community experts moderated by Gulf Coast Community Foundation's Dr. Kameron Partridge Hodgens: Fredd Atkins, Christine Quigley, Justin Bloom, and Tom Higginbotham along with Rob Bilott. They discussed the current state of environmental justice and where we are heading in terms of environmental factors affecting the Florida Suncoast. The panelists shared their expertise, insights, and experiences regarding the ongoing struggle for environmental justice in the region.

The first session focused upon "Where Are We Now?" The panelists highlighted the progress that has been made so far in terms of environmental justice, but also emphasized the need for continued collaborative efforts to ensure that everyone has access to a clean and safe environment. The event concluded with a powerful poetry performance by Onyx Hadwen, Project Coordinator of The Multicultural Health Institute.





Timeline of MHI EJ Education and Advocacy Work

Assessment/Shared Decision Making/Action Plans/ Data/Goals Achieved·

2006 1st Community town hall regarding a variety of health concerns and general goals including environmental issues established.

- **2007** Bayhaven Elementary School Earthboxes and NASA Award recognition of STEAMH program, eventually led to installation and painting of Rain Catch Barrels and planting of still productive “Food Forest”

- **2009** Orange Blossom Garden started, with health, nutrition and environmental classes in the garden

- **2012** Alta Vista Mural projects including food from around the world and exercise and wellness series

- **2015** Harwood training and N Sarasota Social Determinants Conversation Series

- **2018** Summarized Data Snapshots from 2016-18 survey assessments key finding zip code 34234 with highest African American population also had highest Asthma rates for Sarasota County correlated with survey finding of 58% noticing dust every time or almost every time they passed Booker High School and the top complaint (22%) about the dust was respiratory problems. Community Town Hall held. Results from this led to subsequent advocacy, legal, and structural actions.

- **2019** Reassessment and update Newtown Story including White Paper on Myrtle Avenue situation. Independent, localized testing and STEAMH ambassador environmental youth stewardship program expanded. Preliminary note of toxic chemicals like Arsenic and lead.

- **2020** First of several lawsuits initiated regarding water quality and illegal dumping in N Sarasota. Defendants included Trademark Metals, Suncoast Metals, Atlantic TNG

Expand Collaboration/Legal And Procedural Advocacy/Monitoring/Education

2022 After discovery of violation of EPA water pollution settlement by Attorney Justin Bloom and Sarasota Waterkeepers, we co-created and conducted community led assessment surveys and interaction on next steps and action plans on how to apply the funds.

2023 Environmental Awareness workshops, “Where we are, where are we going?” - Goals:

- o Develop/Refine action plans for assuring compliance with settlement agreement
 - o Discuss and Consider monitoring plan
 - o Consideration USF prior studies, recommendations for Marian Anderson Brownfield
 - o 80 years dumping, 12-foot deep toxic debris
- Request answers on- How will final “clean up” be assured? Water systems protected?
- o Myrtle corridor and EPA Hot Spot issues remain a challenge

EJ Convening Workgroup Summaries: April 25th, 2023

| Table Number | Conception of an Ideal Healthy Environment | Challenges | Solutions |
|--------------|--|---|--|
| 1 | <ul style="list-style-type: none"> -Chemical Free Soil, healthy food, air, water -Lack of pesticides, antibiotic free food -Stress free -Healthy education for health on healthy practices what is good, what is bad | <ul style="list-style-type: none"> -Lack of knowledge on best practices, laziness -Too much reliance on pesticides and plastics -Lack of awareness, not easy access to information -Lack of local government oversight and clear communications | <ul style="list-style-type: none"> -Personally: <ul style="list-style-type: none"> -share what we know to others -self reflect what things can you change, research, “Do No Harm” -Collectively: <ul style="list-style-type: none"> -Reduce/remove chemicals <ul style="list-style-type: none"> -advocacy, government officials, churches -Raise awareness of needs -Research |

| | | | |
|---|---|--|---|
| | | | <ul style="list-style-type: none"> -Publicize social media -Engage with other environmental groups, unite, support and develop coalitions |
| 2 | <ul style="list-style-type: none"> -An environment that gives people a chance to live a long & Healthy life -An environment free of toxins/ poisons -Full of trees & grass -NO Pollution -Fishable, swimmable, drinkable, boatable | <ul style="list-style-type: none"> -They care about the \$\$ -City is much more stringent on reducing pollution than the County -There is a lot of pollution/not much green space | <ul style="list-style-type: none"> -Allow a pollution monitor to be placed on our yard/talk to neighbors about this -Push for toxic hazardous waste trash cans to promote ease of disposal (protect landfills) -Plant as many trees as I can -Spread the word/small group/church to community |
| 3 | <ul style="list-style-type: none"> -No Chemicals -maintaining/support ecosystem, ex springs -CLEAN WATER FOR ALL -no invasive species -conscious balance w growth and development and adequate infrastructure -Promoting individual awareness and responsibility | <ul style="list-style-type: none"> -Chemicals -Invasive species -general apathy/lack of awareness | <ul style="list-style-type: none"> -Dispose of Marine Flaes properly (Finding alternatives) -Plant Native over lawns (no more introducing invasive species) -Education and connect to resources |
| 4 | <ul style="list-style-type: none"> -Absence of fish kills (red tide), no headaches or sickness -Lack Green foam lake "O" -Eliminate gypsum stacks and wastewater -Increase of manatees and dolphins -Security of clean drinking water -PFAS education increase -Balanced Ecosystem | <ul style="list-style-type: none"> -We fall short of our ideal environment -Decline in water quality and habitat -Poor Drinking water quality | <ul style="list-style-type: none"> -More Community involvement -Less state restrictions/pre-emption -More federal oversight -special truck for paint & Hazardous waste -Individual actions, solar, no hazardous fertilizer/timing, use less water -School environmental education and stewardship |

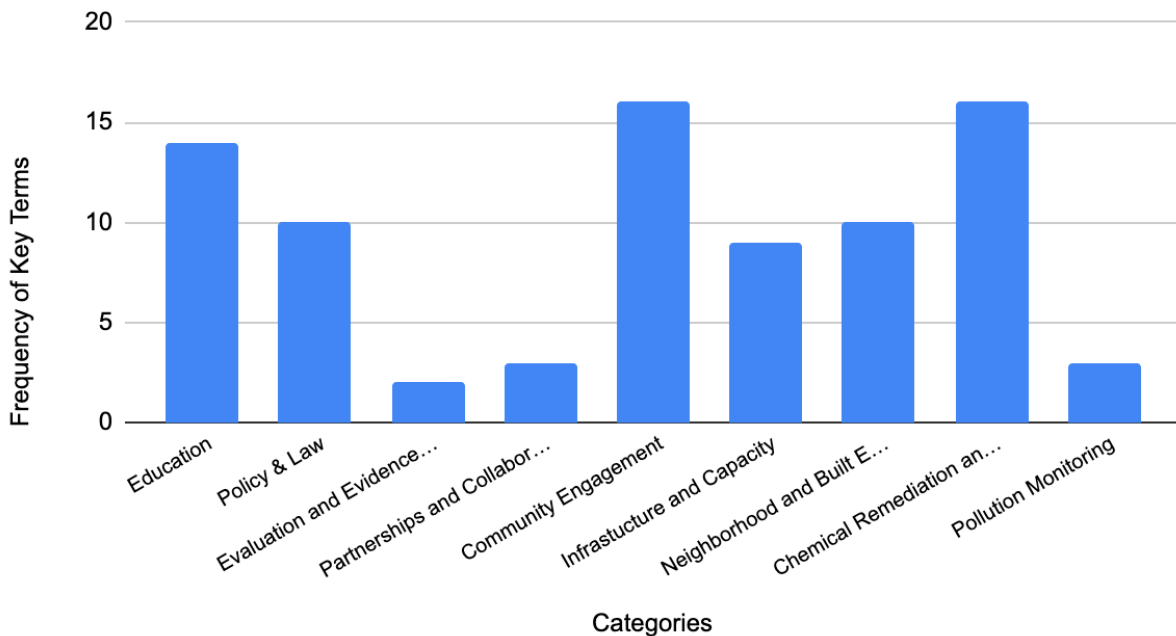
| | | | |
|---|--|---|---|
| | | | <ul style="list-style-type: none"> -Plug Gulf Coast Community Foundation "Water quality" playbook (Ie Pledge to follow this) -Require all HOA's and residents to follow (personal responsibility) -Wastewater support to treat correctly (Environmentally) |
| 5 | <ul style="list-style-type: none"> -Being able to go to beach and not get sick -access to healthy foods -Get communities involved -A world where there's a walkable community, feeling safe in our community, be healthy | <ul style="list-style-type: none"> -Suburban sprawl -Sustainable development projects non-existent -Poor building codes -Future weather events -Monitors for data collection | <ul style="list-style-type: none"> -more sustainable development projects -reduce suburban sprawl -Improve building codes -implement pollution monitors to collect data |
| 6 | <ul style="list-style-type: none"> -define what is healthy in terms of balancing what were eating drinking, anxiety enfolds -How community is treating our children-safety actively being considered -Being aware of or surroundings and how we are surrounded -Being able to build equitably for our community -affordable housing | <ul style="list-style-type: none"> -lack of affordable housing -lack of public transportation -inequitable society -not respecting the land, lack of green spaces -local communities left out -Water contamination -Walkability-you can't walk around -Structural Societal problems with "Fighting" community re natural environment in Florida | <ul style="list-style-type: none"> -How can we support needed changes -Discussions with diverse, interested parties -More mutual aid to invest in our community -Follow through on ideas -Reach out to others to connect -Educating family and friends -Avoid buying from large companies-eat local -Establish networks to trade services |
| 7 | <ul style="list-style-type: none"> -Clean air -Lack of stress -Better Health management -Clean healthy environment -Element of cooperation -Transparency | <ul style="list-style-type: none"> -Lack of transparency -Unnecessary health problems and death -high cost of medical bills -lack of information | <ul style="list-style-type: none"> -Provide and advocate education -Encouraging better life skills -Volunteer -Advocate in a healthy environment -money talks |

| | | | |
|---|---|--|--|
| | | <ul style="list-style-type: none"> -Having to second guess information that is provided, distrust -Money is more important than environmental safety -Money talks | <ul style="list-style-type: none"> -match the message to the audience -willing to do better with less -Taking and practicing sustainability seriously -Boycotting (offending businesses/entities?) -Caring about what's happening |
| 8 | <ul style="list-style-type: none"> -No Trash -No Pollution -More recycling -No Chemicals -No Drugs or Gun Violence -Clean Water -Healthy Air & Soil and lots of trees -Healthy Oceans and no polluting | <ul style="list-style-type: none"> -People Littering -Less recycling -Chemicals are still here (close to the schools too) -Getting rid of the people bringing drugs into the community -Others are not getting clean and being helped -Governments are stopping other governments from being able to make things better -Education needed -There is trash and plastic in the water | <ul style="list-style-type: none"> -People picking up trash and more volunteers -More recycling bins -Try to get rid of them before they make it on to the community -Take a look at the source -Build more water wells -Praise Good behavior for people, governments, and corporations -Education, education, education!! -People coming together as a community to pick up trash |
| 9 | <ul style="list-style-type: none"> -Balance between needs and limits, built environment -Meeting needs of present without sacrificing futures ability to meet needs -Circular, green economy -Holistic interconnectivity -Deep Democracy -Collective Action | <ul style="list-style-type: none"> -Air/Water quality -Development without preserving sufficient green spaces -Mindsets -Disconnect between haves and have nots -Not feeling as a part of a human family -Accessibility challenges -lack of compassion | <ul style="list-style-type: none"> -Foster a deeper sense of connection between youth & Environment -Integrate Mental Health and environmental health together -Individual sustainability actions -Foundation for people to collaborate on environmental solutions -More funding for equity projects with CEOS (include everyone) |

| | | | |
|------------------------|--|---|---|
| 10 (Virtual Hybrid) | <ul style="list-style-type: none"> -walkable -feeling safe and healthy -inclusive environment- all races, genders, sexual orientation, etc. | <ul style="list-style-type: none"> -water contamination -walkability -suburban sprawl -far distance -no trees -structural and environmental problems -community isolation-particularly the elderly | <ul style="list-style-type: none"> -Education -Organization -awareness campaign -social media -govt sponsorship -address infrastructure issues through organization and facilitating community -intergenerational conversations -retooling dashboard to environmental justice -getting involved, encouraging each other to act in support of that goal -More native plants, IPM |
|------------------------|--|---|---|

Narrative Evaluation of Workgroup Responses

Narrative evaluation of EJ Workgroup Responses

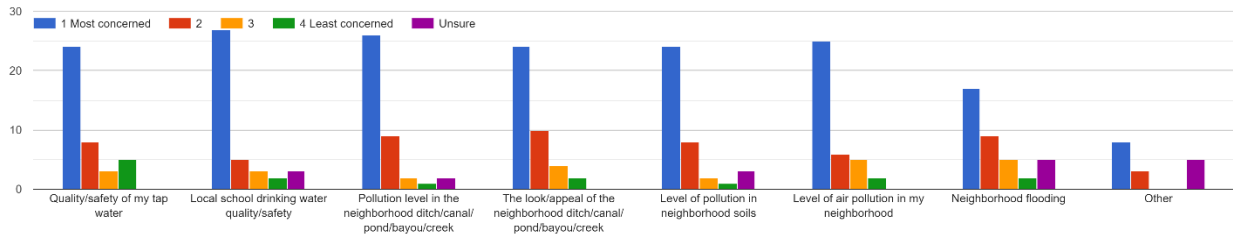


In order to determine what solutions or avenues the attendees deemed most important, we performed a narrative analysis of the responses by creating groups of ideas and matching keywords used in the responses to those groups. The table above shows the number of times

any keyword associated with a specific category was mentioned among the responses from the workgroups. The most popular categories were community engagement (which included words like community, collaboration, mobilization, and outreach) and chemical remediation and cleanup (which included words like chemical, pollutant, contamination, and mitigation).

MHI Collaborative Environmental Justice Survey, 2022 - 2023

Are you concerned about the physical environment – air, water, and soil quality - in North Sarasota? Please rate your level of concern for each of the following (1 - most concerned and 4 - least concerned).



Based on our survey, residents of zipcode 34234 are deeply concerned about the environmental health of their neighborhood. Residents indicated they were most concerned about the drinking water quality of the nearby school, but all of the issues that were asked about (Quality/safety of my tap water, pollution level in the neighborhood ditch/creek/pond/bayou, level of pollution of neighborhood soils, overall neighborhood pollution level, and neighborhood flooding) were issues of major concern for residents of 34234.

Additionally, some respondents provided narrative answers:

- gentrification by businesses and opportunity real estate investment that will bring in more traffic and impacts: can a standard be set for sustainable development and loss of shade trees and green space due to development?
- Oily Streets --> heavy pollution
- We would like to see the Whitaker Bayou dredged from Tamiami to MLK
- I live on the Whitaker Bayou, I would like to see it dredged, and cleaned, I have been to several of the Bayou Cleanups and will continue. This would enhance the neighborhood.
- Greenway creation on the Bayou and the Bike trail to Venice.
- Lack of native plants for soil erosion, food for birds and pollinators

These narrative responses mirror some of those provided by the Environmental Justice Workgroup table, and indicate that these same issues have been going on for a significant amount of time.

Environmental Health Perceptions and Impacts in North Sarasota

Environmental Health Perceptions and Impacts in North Sarasota

Alexandra Andrade, Alexa Millan Rodenas, Onyx Hadwen B.A., Lisa Merritt M.D.

Multicultural Health Institute

<https://www.the-mhi.org>



Introduction

- In 2016 Newtown, a historical Black American neighborhood in North Sarasota, reported higher ER visits due to Asthma than any other area of Sarasota county.
- 12% of Sarasota's population identifies as Black or African American, however Census Tract 3 (within the 34234 ZIP code) has a population that identifies as 72% Black or African American (2020).
- In 2018 MHI formed the Newtown Health Disparities and Environment Collaborative with other organizations to address concerns about the health effects of air and water pollution, by collecting survey and public health data, in order to explore the cause of excess Asthma cases.
- This advocacy resulted in successful lawsuits led by Suncoast Waterkeeper against certain industrial facilities on Myrtle Ave. Supplemental Environmental Projects (SEPs) were awarded for the Whitaker Bayou Watershed.
- MHI conducted a survey to receive community input on how this funding should be spent.



Dirt pile at a facility across the street from Booker High School, 2018.



With dry weather, particulate matter gets tracked on to roads and into the air by vehicles, and when it rains, the dust flows into storm drains and enters waterways, 2018.



Newly paved road on Myrtle Ave between Booker High School and several industrial and manufacturing plants, 2023.

Results

Demographics

| Concerns | % |
|--|-----|
| Pollution in neighborhood ditch/creek | 69% |
| Quality/safety of drinking water in local school | 67% |
| Pollution in soil | 62% |
| Air quality | 62% |

Note: 77.4% of survey responses live in 34234 ZIP code.

Results for Desired Changes

| Desired Changes | % |
|-------------------------------------|-------|
| More trash cans to reduce littering | 80.0% |
| MLK Park development | 76.5% |
| Launching Dock at Whitaker Bayou | 66.0% |
| Food Forest in park | 59.6% |

Note: 55.3% of all respondents are interested in volunteering for MLK Park Development.

Conclusion

The industrial and manufacturing facilities that have been plaguing the Newtown community for decades are causing not only environmental issues but are also bringing rise to health concerns for the local residents. After the success of the 2021 lawsuits against some of these manufacturing plants, the 2022 survey was distributed so that local residents were able to have a vote in how the community improves, allowing them to address their community needs and have a say in the process of how to best improve their surrounding environment. The Newtown Health Disparities and Environmental Collective continue to make progress in environmental efforts for the 34234 ZIP code.



MHI Scholars at the Whitaker Bayou Clean-up, 2023.



Survey board at Whitaker Bayou Clean-up (participants placed stickers next to desired changes), 2023.

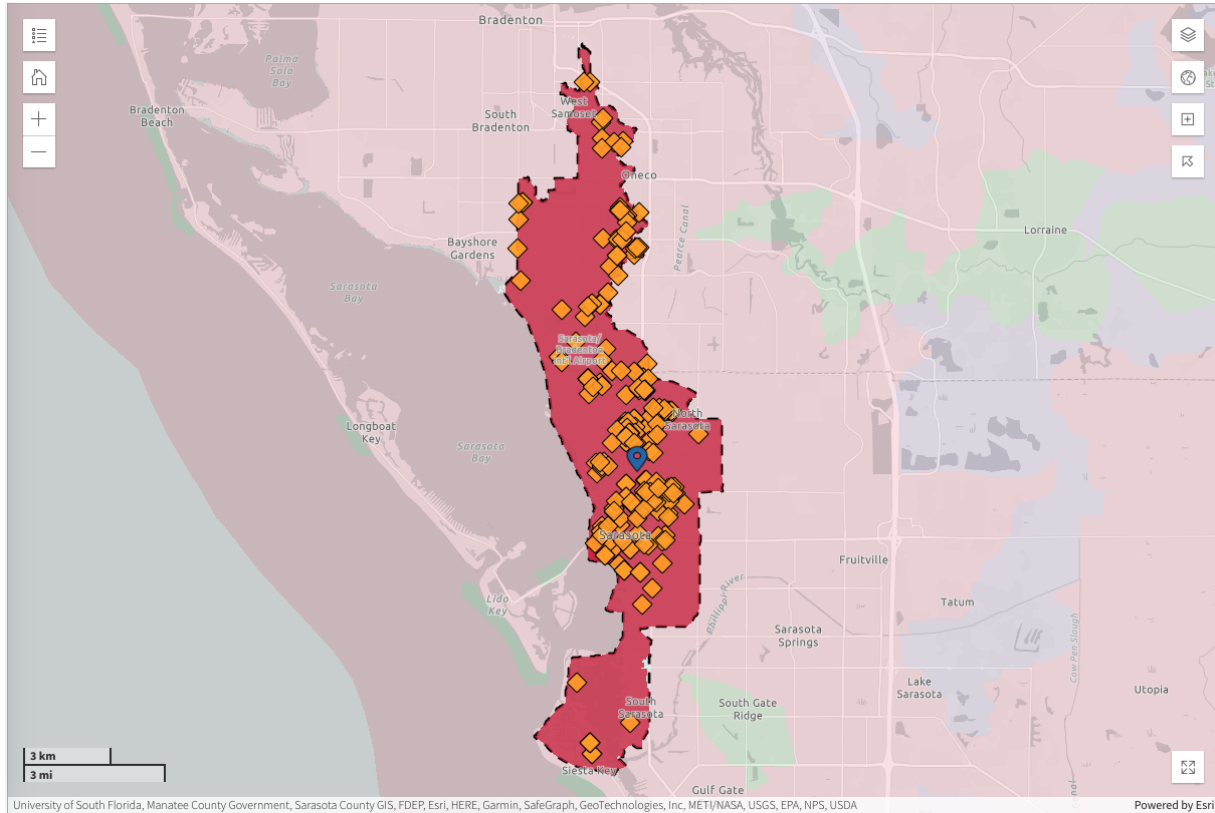
Methods

- An Environmental Community Assessment Survey was conducted to explore North Sarasota residents' perceptions of their environment and desired improvements.
- Convenience sample
 - Flyers distributed in the local area.
 - Survey accessed online by scanning a QR code
 - Distributed to community members electronically.
- Focus groups

Supporting References

Related EPA Maps and non-functional Air Quality Monitors

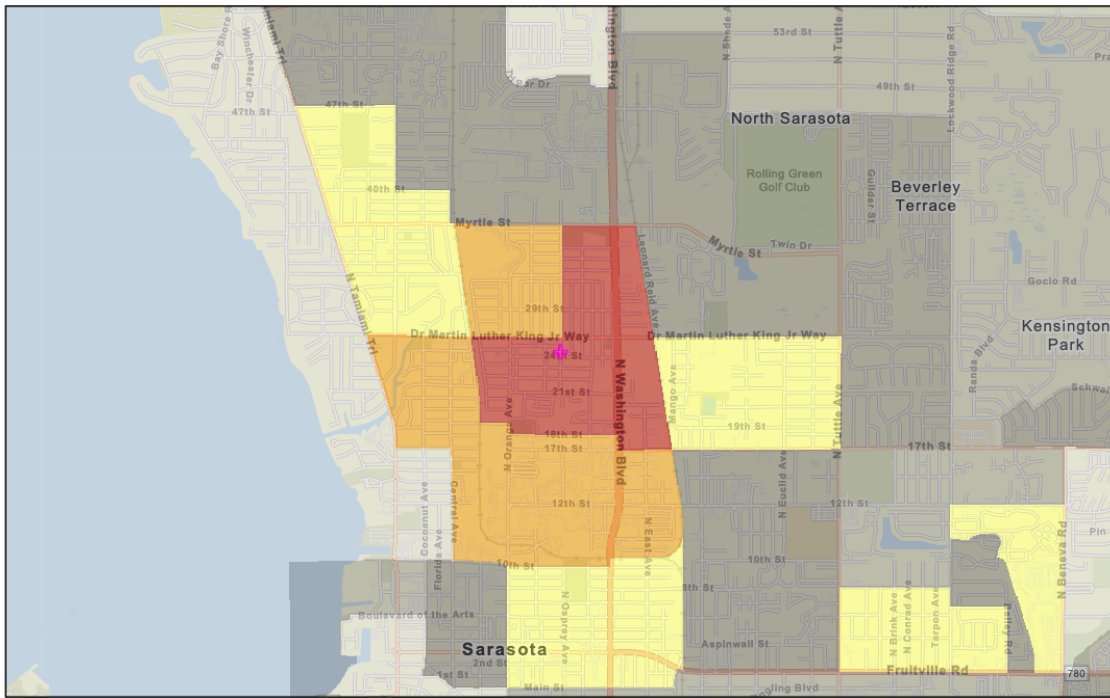
The following images are evidence of the poor air and water quality in 34234, from reputable sources such as the EPA and the FDEP. Context and sources will be provided under the images.



This map from the EPA’s “How’s my Waterway?” data tool shows that every body of water in the area of 34234 is impaired in some way (indicated in red). The orange diamonds indicate the “permitted dischargers”, businesses that are permitted by the Florida government to discharge waste into waterways.

[EPA - How's My Waterway? - 34234](#)

Note: the area shown on the map extends south of the area in concern in the 34234 zipcode. In this tool, the EPA includes even parts of water bodies that are within the geographic region selected, as all these water bodies are connected.



5/2/2023

+ Search Result (point)
 50 - 60 percentile
 80 - 90 percentile
 Data not available

Diesel Particulate Matter (National Percentiles)

Less than 50 percentile
 60 - 70 percentile
 90 - 95 percentile
 95 - 100 percentile

0 0.28 0.55 1.1 mi
 0 0.42 0.85 1.7 km

1:36,112
 University of South Florida, Manatee County Government, Sarasota County GIS, FDEP, Esri, HERE, Garmin, SafeGraph, GeoTechnologies, Inc., METI

This image comes from the EPA’s Environmental Justice Screening and Mapping tool, known as EJScreen. This image shows the level of Diesel Particulate matter in 34234 and surrounding areas. The census tract in the middle is a census tract that is primarily populated with Black people, and it is in the 95 percentile for highest levels of Diesel particulate matter. The intersection of N Washington Blvd and Dr. Martin Luther King Jr. Way also falls within this census tract, possibly affecting the levels of diesel particulate matter.

EJScreen Report (Version 2.11)

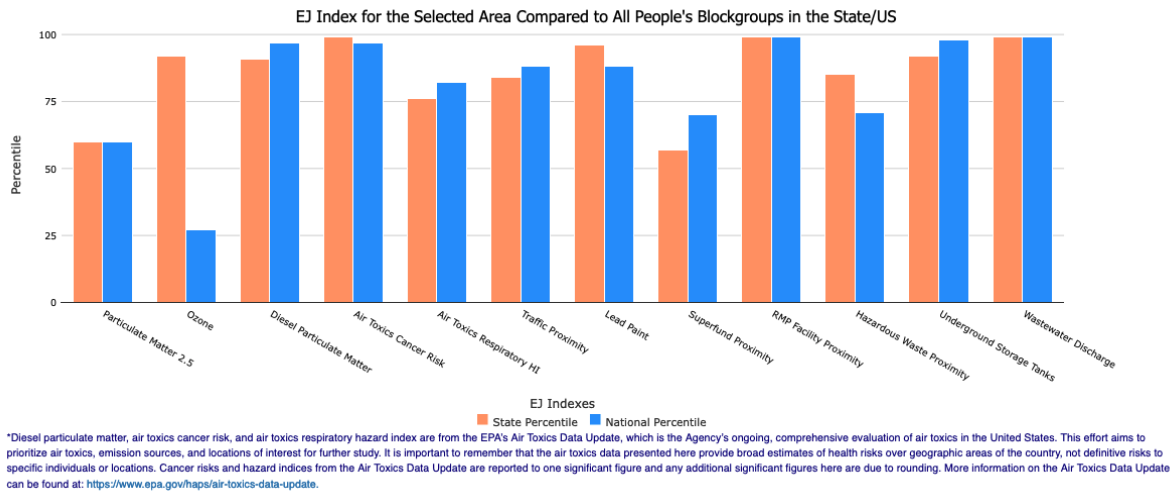
Blockgroup: 121150003002
FLORIDA, EPA Region 4
Approximate Population: 2,101
Input Area (sq. miles): 0.36

| Selected Variables | Percentile in State | Percentile in USA |
|--------------------------------------|---------------------|-------------------|
| Environmental Justice Indexes | | |
| Particulate Matter 2.5 EJ Index | 60 | 60 |
| Ozone EJ Index | 92 | 27 |
| Diesel Particulate Matter EJ Index* | 91 | 97 |
| Air Toxics Cancer Risk EJ Index* | 99 | 97 |
| Air Toxics Respiratory HI EJ Index* | 76 | 82 |
| Traffic Proximity EJ Index | 84 | 88 |
| Lead Paint EJ Index | 96 | 88 |
| Superfund Proximity EJ Index | 57 | 70 |
| RMP Facility Proximity EJ Index | 99 | 99 |
| Hazardous Waste Proximity EJ Index | 85 | 71 |
| Underground Storage Tanks EJ Index | 92 | 98 |
| Wastewater Discharge EJ Index | 99 | 99 |

EJ Indexes - The EJ indexes help users screen for potential EJ concerns. To do this, the EJ index combines data on low income and people of color populations with a single environmental indicator

The [EJScreen](#) tool also auto-generates reports for a given geography that includes all of the environmental justice factors in one report. In this table, we can see that for nearly

factor the EPA records, this census block group is above the 50th percentile. There are several factors that are in the 99th percentile for the state, meaning that 99% of census block groups in the state in the same or similar economic and demographic situation have a lower level of that particular pollutant (for example, wastewater discharge and RMP Facility proximity).



A link to the full EJScreen Report for the 121150003002 Census Block can be found [here](#).

[A Time to End the Assault On Our Environment, by Dr. Doris Brown, Journal of the National Medical Association](#) Describes decades of historical environmental injustice and myriad health and psychosocial impacts upon vulnerable communities.

Florida Department of Environmental Protection -- Air quality Monitoring for Sarasota County

Florida Department of Environmental Protection

DEP Home About DEP Programs Contact Site Map Search

Air Quality Monitoring
Daily Readings for May 9, 2023

Air Resource Management

Data on this page are updated hourly from 7:20 AM until 11:20 PM (Eastern time)

It is important to note that the ozone monitoring data less than three months old viewed on this website have generally not been verified and checked for quality assurance in accordance with federal requirements.

More Details about: [Paw Park](#)
[Ad Hoc Reporting](#)

AQS # L115-1006
Paw Park
Sarasota County
Sarasota, FL 34235

CO is not monitored at this site.

NO2 is not monitored at this site.

Ozone is not monitored at this site.

PM 2.5 is not monitored at this site.

DEP records indicate that PM 10 monitoring was closed on the date selected.

SO2 is not monitored at this site.

Last updated: July 27, 2012

Programs
» Air Home
» Florida's Air Quality
» Public Notices

Assistance
» Site Map
» Glossary (EPA) »
» Contact Us

Get Adobe Reader

Unless indicated, documents on this Web site are Adobe Acrobat files, and require the free reader software.

The above screenshot is data for an air quality monitor located in Paw Park. According to the publicly available FDEP Air Quality Website, this monitor does not monitor any of the air quality variables.

| | A | B | C | D | E | F | G | H | I | J | K |
|-------|---------|-------|------|---------------|------|-------------|---|---|---|-----|---|
| 37087 | PAWPARK | PM10C | 00th | 3/26/23 5:00 | 6.5 | 6.54572222 | | | | 079 | |
| 37088 | PAWPARK | PM10C | 00th | 3/26/23 6:00 | 5.7 | 5.78844444 | | | | 079 | |
| 37089 | PAWPARK | PM10C | 00th | 3/26/23 7:00 | 8 | 8.00605555 | | | | 079 | |
| 37090 | PAWPARK | PM10C | 00th | 3/26/23 8:00 | 10.8 | 10.88605555 | | ← | | 079 | |
| 37091 | PAWPARK | PM10C | 00th | 3/26/23 9:00 | 12.9 | 12.943 | | | | 079 | |
| 37092 | PAWPARK | PM10C | 00th | 3/26/23 10:00 | 8.5 | 8.53483333 | | | | 079 | |
| 37093 | PAWPARK | PM10C | 00th | 3/26/23 11:00 | 16.8 | 16.82875 | | | | 079 | |
| 37094 | PAWPARK | PM10C | 00th | 3/26/23 12:00 | 14.8 | 14.8101666 | | | | 079 | |
| 37095 | PAWPARK | PM10C | 00th | 3/26/23 13:00 | 19.5 | 19.5038055 | | | | 079 | |
| 37096 | PAWPARK | PM10C | 00th | 3/26/23 14:00 | 16.7 | 16.7578011 | | | | 079 | |
| 37097 | PAWPARK | PM10C | 00th | 3/26/23 15:00 | 23.6 | 23.6281111 | | | | 079 | |
| 37098 | PAWPARK | PM10C | 00th | 3/26/23 16:00 | 28.2 | 28.2902777 | | | | 079 | |
| 37099 | PAWPARK | PM10C | 00th | 3/26/23 17:00 | 22.6 | 22.6130555 | | | | 079 | |
| 37100 | PAWPARK | PM10C | 00th | 3/26/23 18:00 | 25 | 25.0755555 | | | | 079 | |
| 37101 | PAWPARK | PM10C | 00th | 3/26/23 19:00 | 19.5 | 19.5558333 | | | | 079 | |
| 37102 | PAWPARK | PM10C | 00th | 3/26/23 20:00 | 16.3 | 16.3713333 | | | | 079 | |
| 37103 | PAWPARK | PM10C | 00th | 3/26/23 21:00 | 14.6 | 14.6632222 | | | | 079 | |
| 37104 | PAWPARK | PM10C | 00th | 3/26/23 22:00 | 13 | 13.0738011 | | | | 079 | |
| 37105 | PAWPARK | PM10C | 00th | 3/26/23 23:00 | 12 | 12.0951111 | | | | 079 | |
| 37106 | PAWPARK | PM10C | 00th | 3/27/2023 | 12.4 | 12.4529722 | | | | 079 | |
| 37107 | PAWPARK | PM10C | 00th | 3/27/23 1:00 | 7.7 | 7.74191666 | | | | 079 | |
| 37108 | PAWPARK | PM10C | 00th | 3/27/23 2:00 | 6.5 | 6.55019444 | | | | 079 | |
| 37109 | PAWPARK | PM10C | 00th | 3/27/23 3:00 | 8.9 | 8.94029444 | | | | 079 | |
| 37110 | PAWPARK | PM10C | 00th | 3/27/23 4:00 | 15 | 15.0383611 | | | | 079 | |
| 37111 | PAWPARK | PM10C | 00th | 3/27/23 5:00 | 11.8 | 11.8386666 | | | | 079 | |
| 37112 | PAWPARK | PM10C | 00th | 3/27/23 6:00 | 9.7 | 9.76919444 | | | | 079 | |
| 37113 | PAWPARK | PM10C | 00th | 3/27/23 7:00 | 38.2 | 38.2194444 | | | | 079 | |
| 37114 | PAWPARK | PM10C | 00th | 3/27/23 8:00 | 81 | 8.10255555 | | ← | | 079 | |
| 37115 | PAWPARK | PM10C | 00th | 3/27/23 9:00 | 18.3 | 18.3535555 | | | | 079 | |
| 37116 | PAWPARK | PM10C | 00th | 3/27/23 10:00 | 20 | 20.0078888 | | | | 079 | |
| 37117 | PAWPARK | PM10C | 00th | 3/27/23 11:00 | 18.8 | 18.8792777 | | | | 079 | |
| 37118 | PAWPARK | PM10C | 00th | 3/27/23 12:00 | 31.3 | 31.3912222 | | | | 079 | |
| 37119 | PAWPARK | PM10C | 00th | 3/27/23 13:00 | 33 | 33.0077777 | | | | 079 | |
| 37120 | PAWPARK | PM10C | 00th | 3/27/23 14:00 | 30.1 | 30.1772222 | | | | 079 | |
| 37121 | PAWPARK | PM10C | 00th | 3/27/23 15:00 | 39.2 | 39.2430555 | | | | 079 | |
| 37122 | PAWPARK | PM10C | 00th | 3/27/23 16:00 | 54 | 54.0441666 | | | | 079 | |
| 37123 | PAWPARK | PM10C | 00th | 3/27/23 17:00 | 42.9 | 42.9763888 | | | | 079 | |
| 37124 | PAWPARK | PM10C | 00th | 3/27/23 18:00 | 46.4 | 46.4291666 | | | | 079 | |
| 37125 | PAWPARK | PM10C | 00th | 3/27/23 19:00 | 32 | 32.0969444 | | | | 079 | |

However, thanks to Matthew Dodd from the Sarasota County Government, we were able to get raw hourly data for the Paw Park monitor located several miles away from the area of key interest, however it is the closest available monitoring station.



Multicultural Health Institute
Promoting quality healthcare for all

Environmental Concerns Affecting Our Planet



Environmental issues are problems that arise from the impact of humans on the environment and threaten the continuation of life. They may be related to the causes of their emergence, biological, physical, chemical and social factors.

What is Conservation? Why is it important?

- Conservation is the protection and preservation of natural resources, including plants, animals, and their habitats.
- It involves managing resources responsibly to ensure their availability for future generations.
- Conservation is important for maintaining biodiversity and ecological balance.
- It ensures the sustainability of natural resources for human use.
- It helps prevent the loss of endangered species and their habitats.
- It supports the health of ecosystems and the services they provide, such as clean air and water.

Threatened local species

here are several species that are considered threatened in Sarasota, FL. Some of these include:

- West Indian manatee
- Gopher tortoise
- Red-cockaded woodpecker
- Florida scrub-jay
- Bald eagle
- Sea turtles (loggerhead, green, and leatherback)

Several organizations, including the Sierra Club, Wildlife Federation, and Nature Conservancy, have worked to avert further disaster for these species. Some of the actions these groups have taken include:

- Supporting the implementation and enforcement of regulations that protect these species and their habitats.
- Advocating for preserving and restoring critical habitats, such as wetlands, forests, and beaches.
- Conducting research and monitoring efforts to better understand these species and their needs.
- Providing education and outreach to the public, including landowners and developers, about the importance of protecting these species and their habitats.
- Working with government agencies and other stakeholders to develop conservation plans and strategies.

Overall, these organizations have played an important role in protecting threatened species in Sarasota and ensuring their survival for future generations.



carecoordination@the-mhi.org



www.the-mhi.org

MHI EJ Collaborative Synthesis of Actionable Goals 2023

-Personally:

- share what we know to others, conversation, social media
- Spread the word/small group/church to community
- self reflect what things can you change, research, "Do No Harm"
- Allow a pollution monitor to be placed on our yard/talk to neighbors about this
- Plant as many trees as I can
- Dispose of Marine Flares properly (Finding alternatives)
- Plant Native over lawns (no more introducing invasive species)
- Individual actions, solar, no hazardous fertilizer/timing, use less water
- Require all HOA's and residents to follow (personal responsibility)
- Volunteer
- More recycling bins
- Intergenerational conversations and actions

-Collectively:

Education

- Communication increased through accurate social media informational sharing
- Raise awareness of needs to counteract apathy
- School environmental education and stewardship
- Reach out to others to connect
- Foster a deeper sense of connection between youth & Environment

Policy

- advocacy, government officials, churches
- Push for toxic hazardous waste trash cans to promote ease of disposal (protect landfills)
- More federal oversight
- Wastewater support to treat correctly (Environmentally)
- address infrastructure issues through organization and facilitating community
- Measure and Reduce/remove chemicals
- more sustainable development projects
- Improve building codes
- Expand pollution monitors to collect data closer to areas of greatest concern, improve ease of public access to data
- Address zoning issues
- Dredge the Whitaker Bayou from Tamiami to MLK
- Create a nature preserve near the Whitaker Bayou to help support the dredging and restore the natural environment and create a tourist destination
- Make internal environment assessments of home condition (i.e. mold, water damage, structural damage, lead in structures or plumbing) available to those who need it

Community organization

- Engage with other environmental groups, unite, support and develop coalitions
- Integrate Mental Health and environmental health together

- More Community involvement
- Discussions with diverse, interested parties
- Praise Good behavior for people, governments, and corporations
- More mutual aid to invest in our community
- Follow through on ideas
- match the message to the audience, bridge historical distrust

Philanthropy/grant resources

- Research
- Targeted resources
- Support for greater renewable energy and disaster preparedness at community level
- Solar, portable solar charging stations, water purification systems, emergency hydration and purification stations
- Support for widening coverage and information available for air, soil, water monitoring
- Support for human health impacts from climate change and environmental impacts-internal and external environments

Immediate Next Steps

Promote available resources:

[The Newtown Data Story](#) is a combination of empirical measures of Social Determinants of Health and anecdotal accounts from the Newtown Community about key topics that affect health, including housing, income, community safety, food access, and more. The Newtown Data Story reflects many of the same issues covered in this Environmental Justice Convening.

[-Gulf Coast Community Foundation Water Quality Playbook](#)

- Widen participation of EJ coalition subcommittees

Christine Quigley SBEP contact Christine Quigley <Christine@sarasotabay.org>

[-National Ambient Air Quality Standards \(NAAQS 101\) Webinar for Communities June 27, 2017](#)

- Conduct "**EJ Climate Cruise**" information dissemination campaign

Coalition to select participants and audiences

Possibly to include:

- Neighborhood associations
- Rotary
- Philanthropic organizations
- Health Departments
- Medical Societies
- Allied health Professions
- University Science/sociology departments

AND

- Continue research to support impactful advocacy

We wish to express appreciation to the many volunteers, expert consultants and community leaders who have contributed to the work of this coalition over the years. We dedicate this work to patients, families and friends living with or who have succumbed to adverse environmental health impacts. In particular, we look forward to continued impactful partnership working towards key actionable goals.

Collaborative members:

Dr. Lisa Merritt, The Multicultural Health Institute
Mary Butler, Amaryllis Park Neighborhood Association
Arthur Lindemanis, Cocconut Neighborhood Association
Barbara Powell Harris, Cocconut Neighborhood Association
Joseph Mack, Amaryllis Park Neighborhood Association
Andre McClerklin, Florida Department of Health CHAT
Valerie Buchand, Newtown Nation
Christine Quigley, Sarasota Bay Estuary Program
Abbey Tyrna, Suncoast Water Keepers
Justin Bloom, Suncoast Water Keepers
Jerald Berry, Florida Department of Health
Margaret Esaw, Newtown Business Leader
Dave Tomasko, Sarasota Bay Estuary Program
Olympia Fulcher, The Multicultural Health Institute
Alex Andrade, The Multicultural Health Institute
Anastassia Kiousis, The Multicultural Health Institute
Manuela Miller, The Multicultural Health Institute
Megan Barry, Sarasota Bay Estuary Program
Rebekah Prieto, The Multicultural Health Institute
Onyx Hadwen, The Multicultural Health Institute
John Hickey, Sarasota County Government
Matthew Dodd, Sarasota County Government
Tiona Settles, Centerplace Health
Tom Higginbotham, SDOH